

TN532D

Siemens S7-1200

March. 2010

PanelMaster, PanelExpress and PM Designer



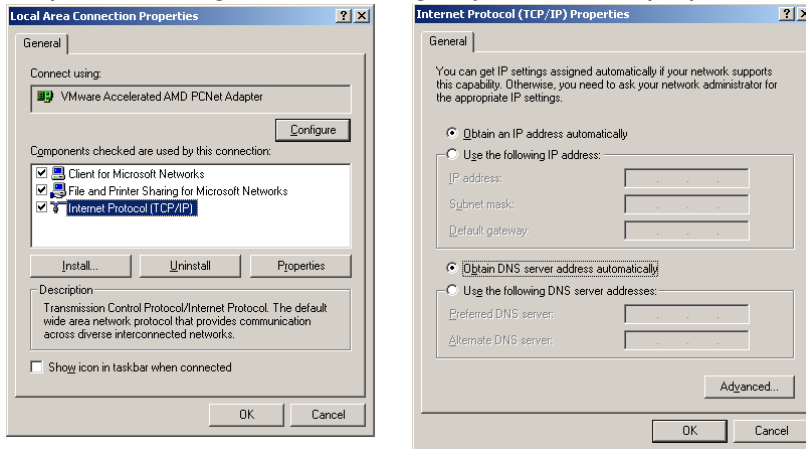
PanelMaster & Siemens S7-1200, S7-1200TCP/IP Hub PC PanelMaster Siemens S7-1200 ◦



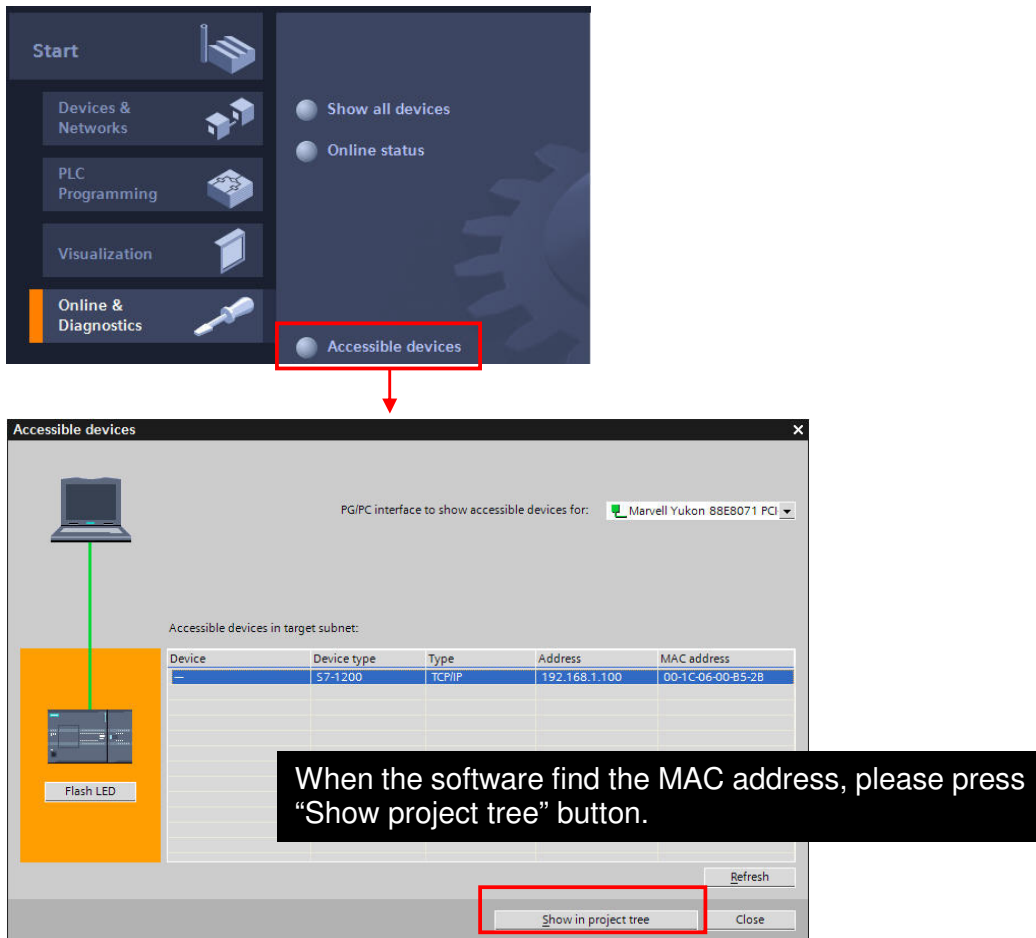
### **(1)Seimens S7-1200 Parameter Setting:**

(a)If the S7-1200 PLC is the new one without IP address:

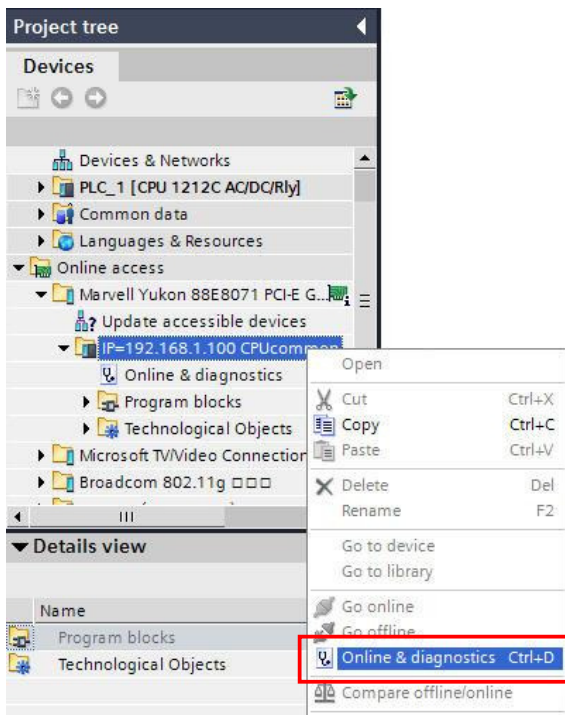
Step1: Switching TCP/IP setting of your PC or laptop to “Obtain an IP address automatically.”



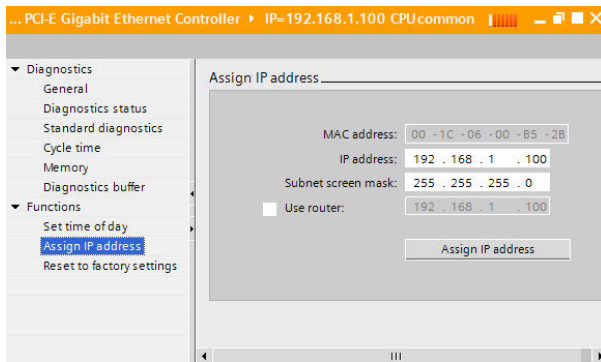
Step2: Select the “Accessible devices” to find out the “MAC address”.



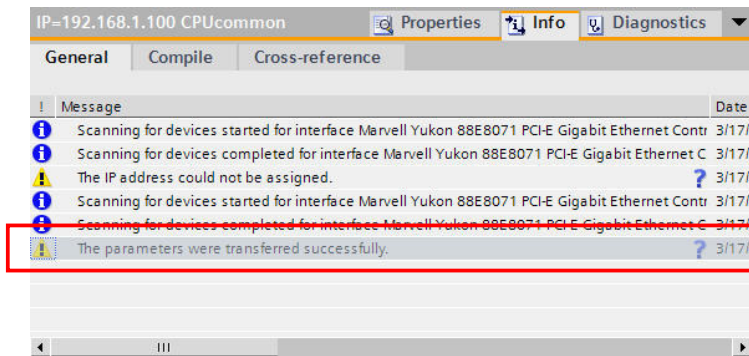
Step3: Select “Online & diagnostics” and link with PLC by MAC address.



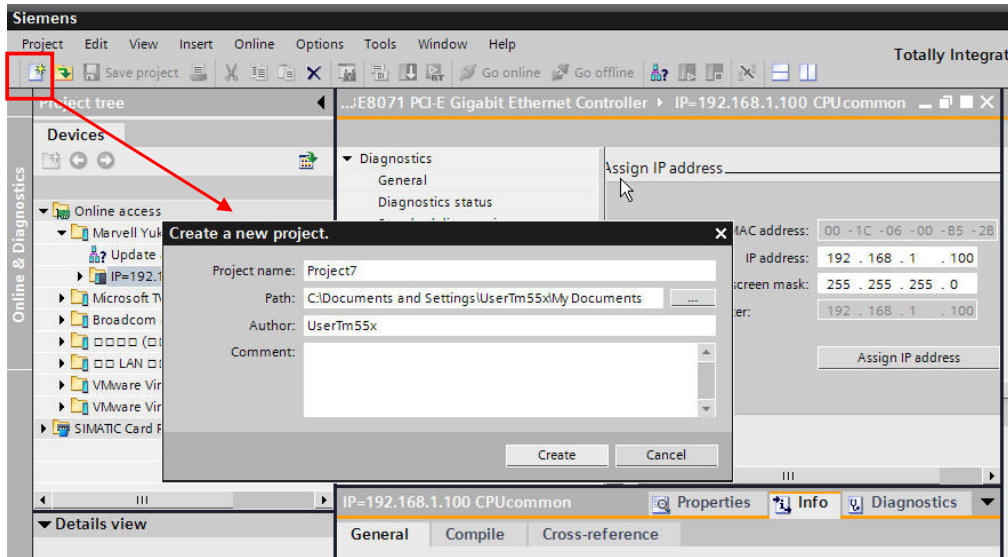
Step4: When you link with PLC by MAC address, assign the IP Address=192.168.1.100; Sub Mask=255.255.255.0.



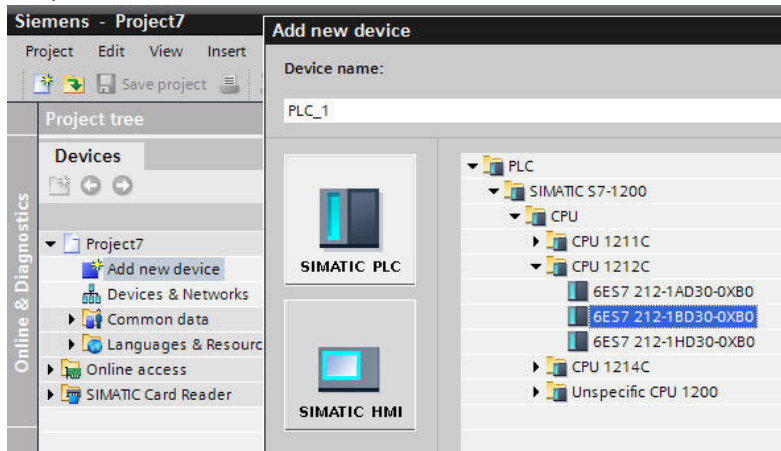
Step5: Make sure the IP address setting is success.



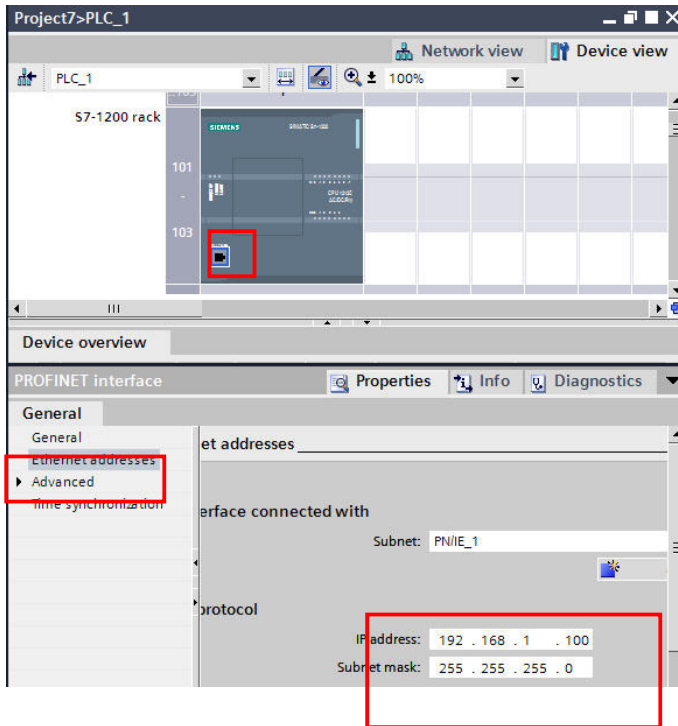
Step6: Create a new project



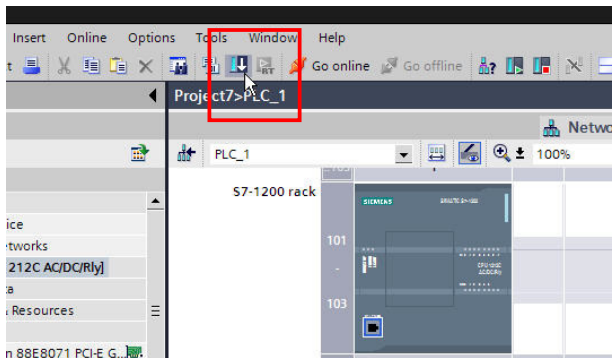
Step7: Select the correct PLC model



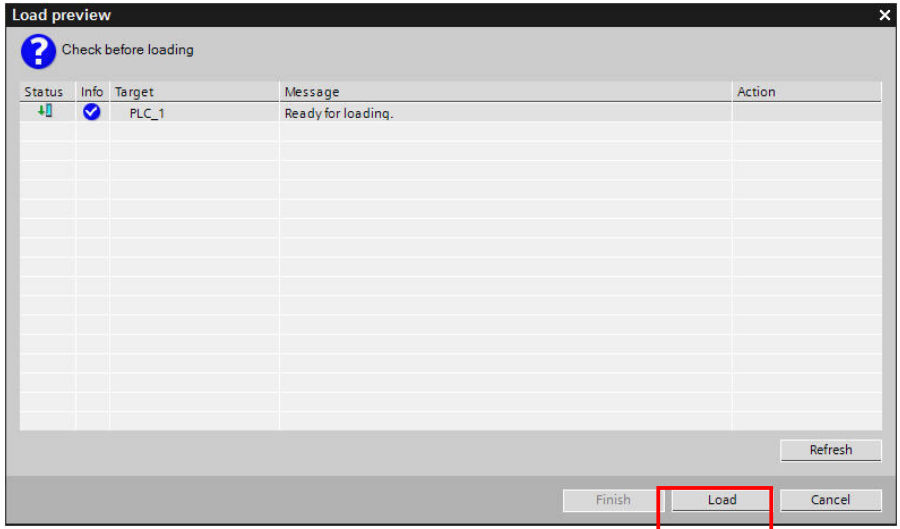
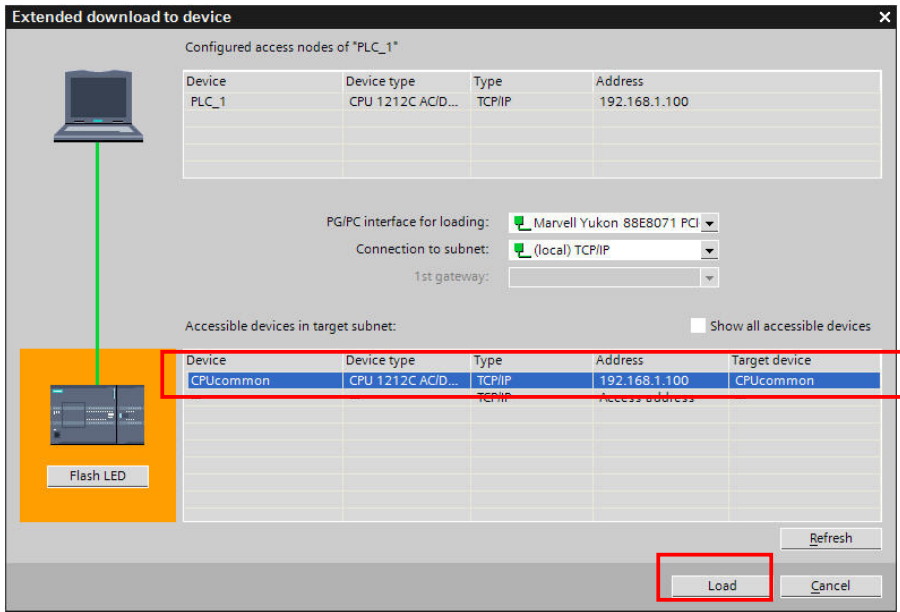
Step8: Key-in the IP=192.168.1.100 and SubMask=255.255.255.0



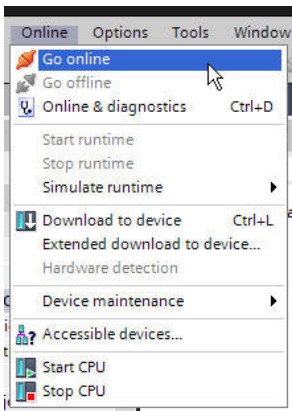
Step9: Download the setting data into PLC.



Step10: Select the correct IP to download



Step11 Go Online °



## Step12: Recheck the linking status

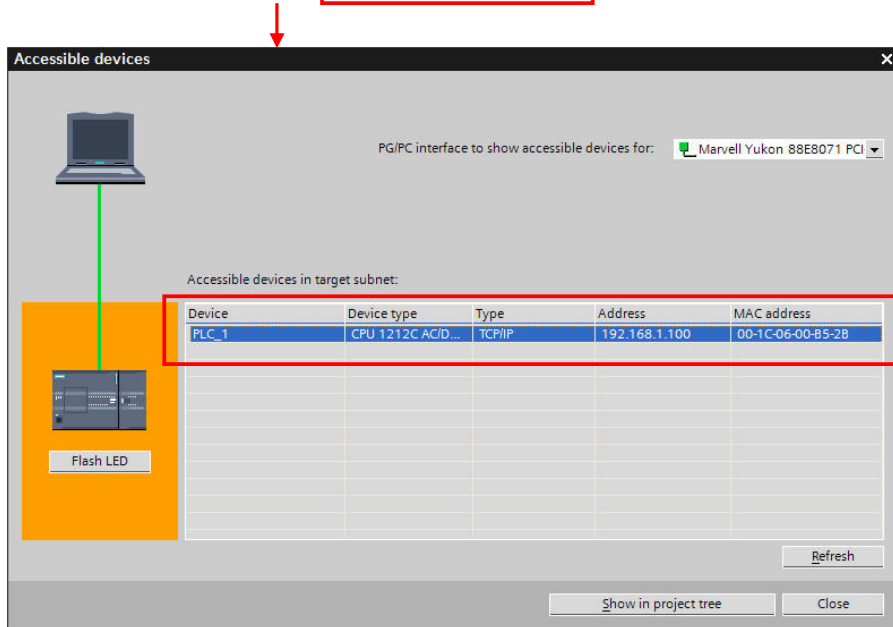
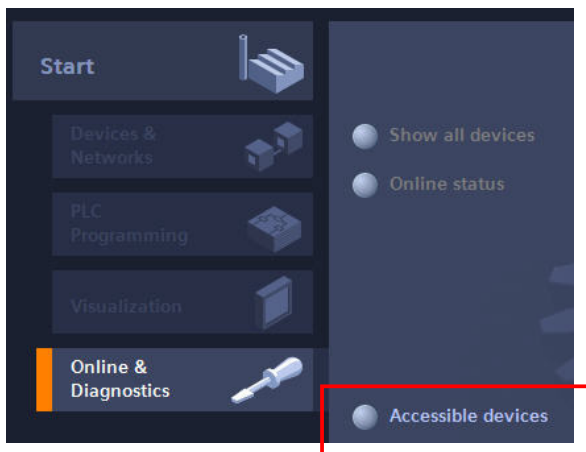
When you see this, it means the PC linking is correct.

Online...	Operat...	Device/module	Message	Details

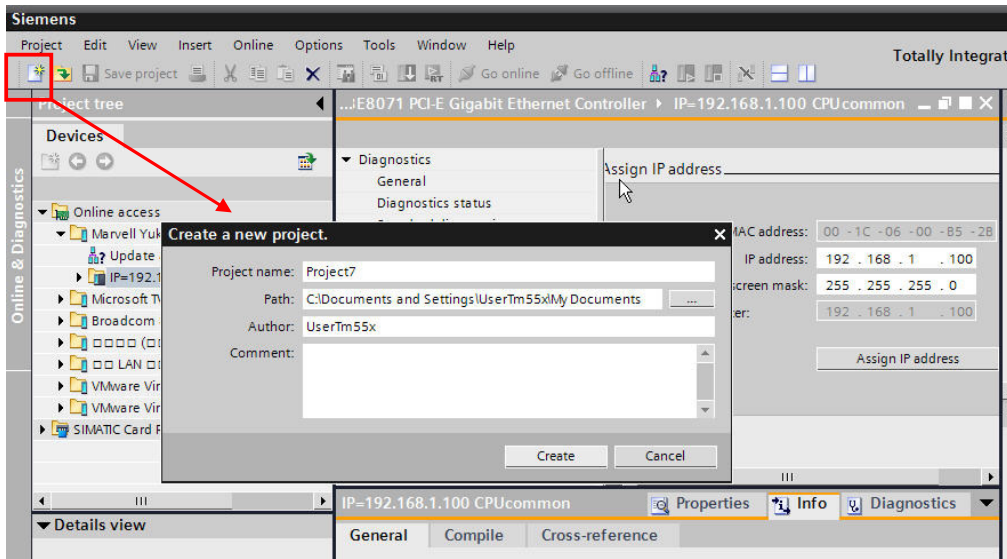
(b)If the S7-1200 PLC has IP address inside

Step1: Select the “Accessible devices” to check the “IP Address”

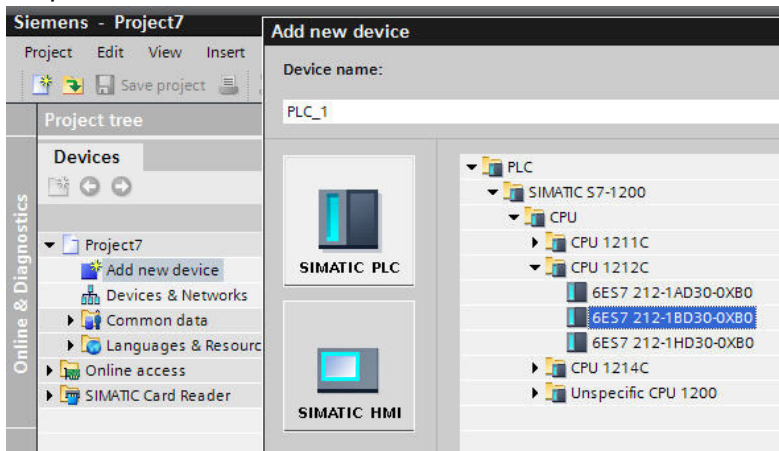




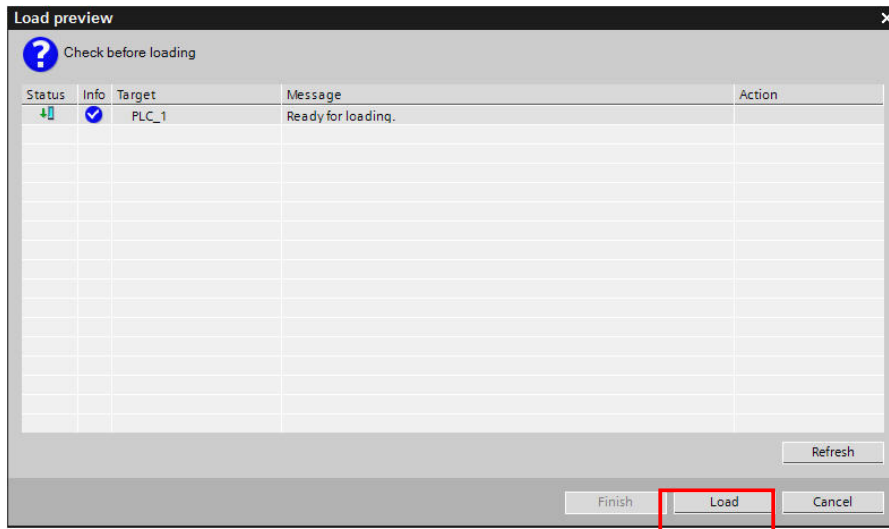
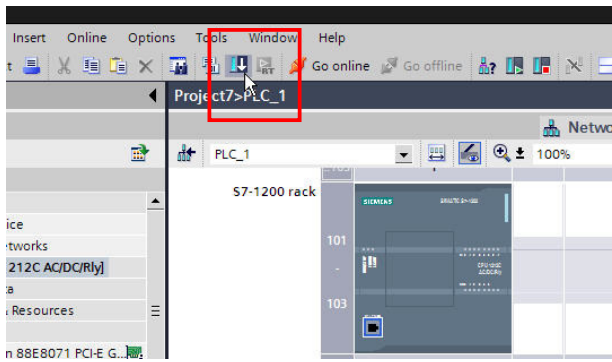
Step2: Create a new project



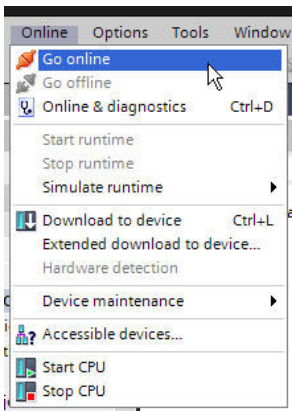
Step3: Select the correct PLC model



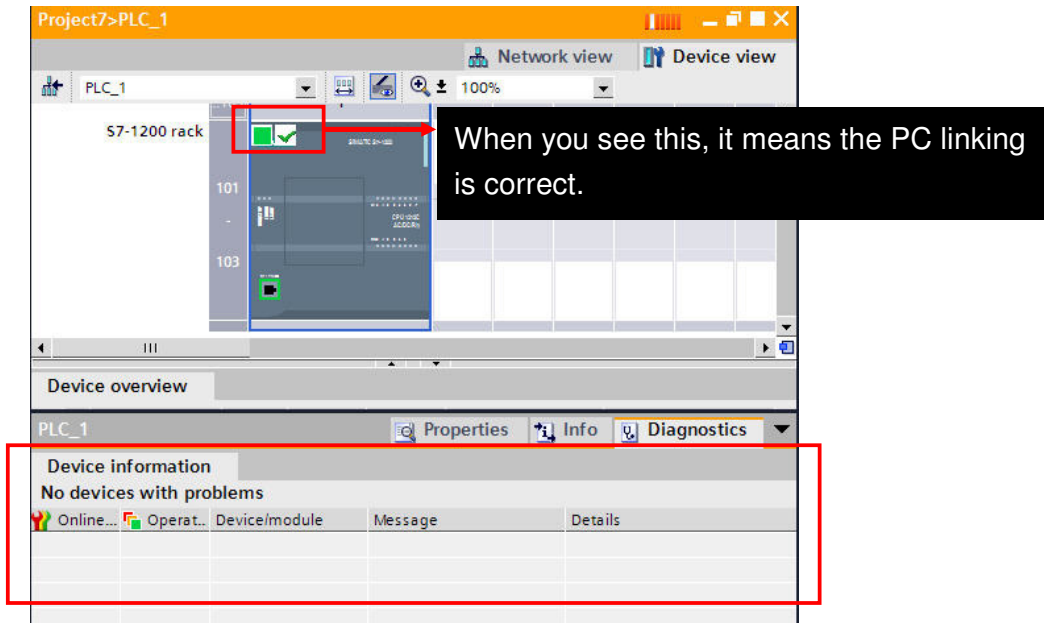
Step4: Download the setting data into PLC.



Step5 Go Online °



Step6: Recheck the linking status



Regarding the detail setting information, please refer to "SIMATIC STEP 7 Basic V10.5 User Manual"

## (2) HMI Settings:

Select [Device/Server: Siemens AG →SIMATIC S7 (Ethernet)]

New Link

Link Number: 1

Link Name: Link 1

Link Type: Direct Link (Ethernet)

Device/Server: Siemens AG SIMATIC S7 (Ethernet)

Link Port: Ethernet1

The duration of showing a communication error message: 5 second(s)

< Back Finish Cancel Help

Setting HMI IP address to **192.168.1.100**

Link Properties

General Parameter

IP Address: 192.168.1.100

Use Default Port

Port: 102

Use Default Rack and Slot Numbers

Rack Number: 1

Slot Number: 1

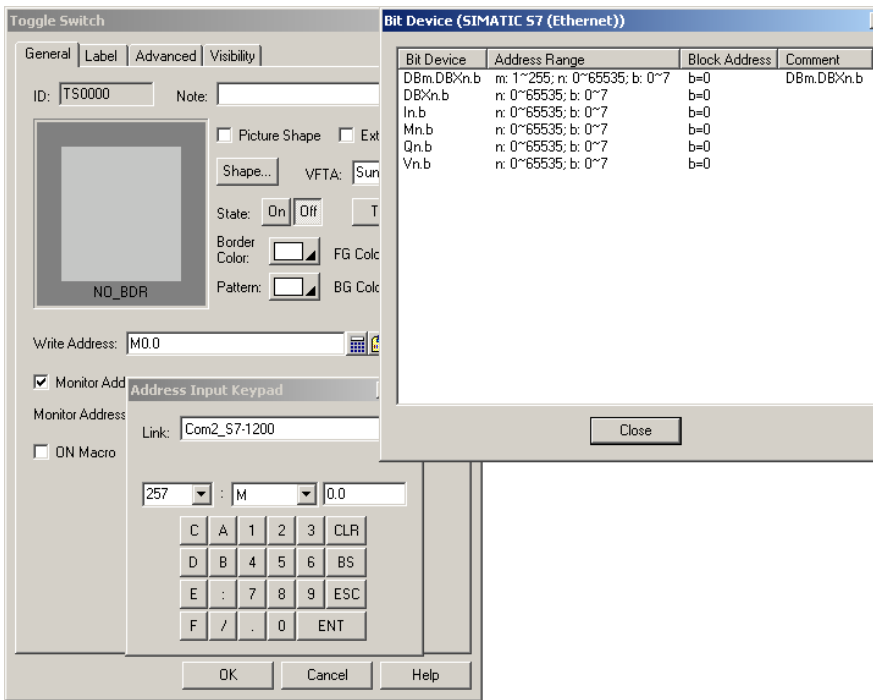
Timeout Time: 0 (x 0.1 Sec.)

Command Delay: 0 (x 0.1 Sec.)

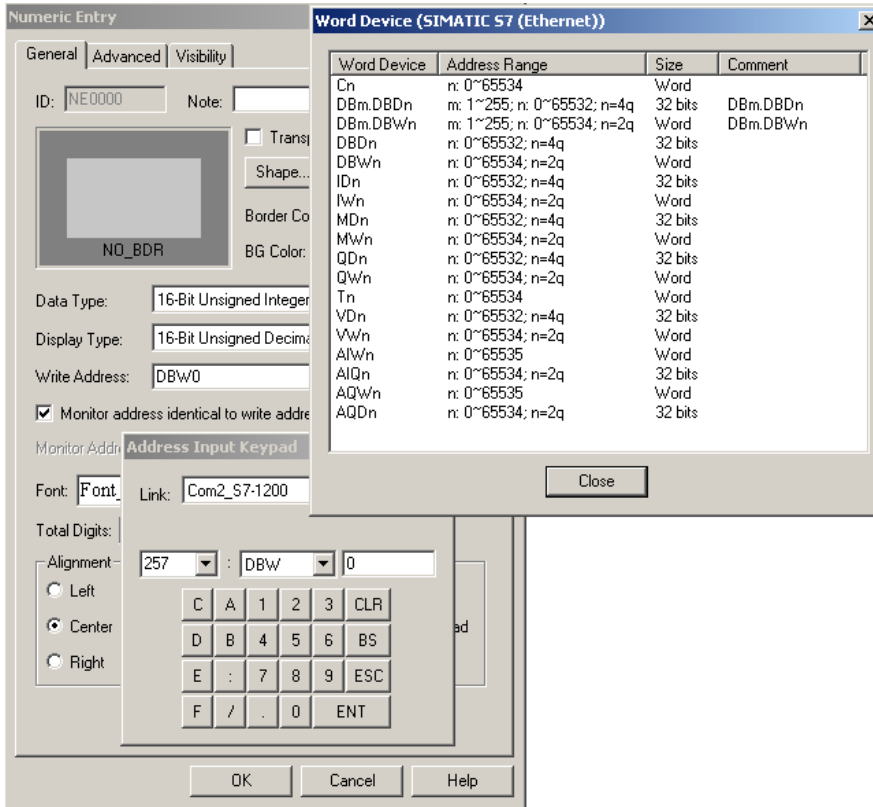
Retry Count: 0

OK Cancel Help

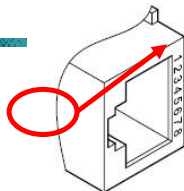
Bit Device:



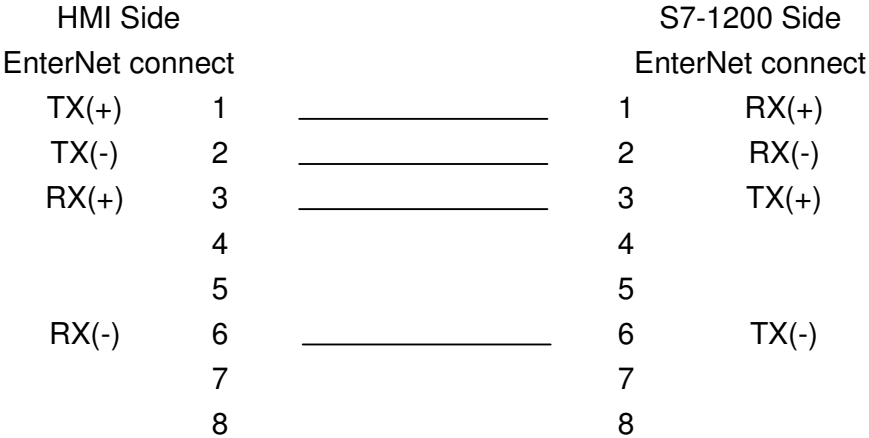
## Word Device:



## (4)Cable Diagram



You can use the general Ethernet Cable to link with PLC, and we will suggest you can link with it via Ethernet Hub.



Technical Support Information:

OffPeak Technologies LLC

[ts@offpeak-solutions.com](mailto:ts@offpeak-solutions.com)

[www.offpeak-solutions.com](http://www.offpeak-solutions.com)

717-891-0971